

ESP32 Ethernet, Wi-Fi & Serial Gateway

1. Overview

UYS2101IA and UYS2101CA are ESP32 based modules having Ethernet, Wi-Fi and serial connectivity. UYS2101 includes an ESP32-D0WD microcontroller, an onboard PCB antenna, an Ethernet transceiver, a 16 MB flash memory, a USB-Serial converter, a 3.3V linear voltage regulator and a voltage supervisory chip. There is also an automatic bootloader activation circuit compatible with ESP-IDF tools.

Default firmware has a serial interface over USB to issue AT commands in order to connect to Ethernet and Wi-Fi networks and use built-in TCP/IP network stack. A custom firmware can be used instead of the default one. When bootloader is activated, the USB port becomes a flash programming interface. This port is connected to UART0 of ESP32.

UYS2101 can work as a standalone serial to Wi-Fi or Ethernet converter. Power is supplied via USB port. UYS2101 has 2 extension headers, and it is possible to mount it to a baseboard and use like a serial modem with AT commands. 5V and 3.3V supply inputs, reset signals, GPIO and serial ports are available in these headers.

2. Interfaces

- 1 x 10/100 MBit Ethernet port
- 1 x USB 2.0 serial port
- 8 x Input and Output capable GPIOs
- 6 x Input only GPIOs
- 1 x Flash programming & general purpose serial port shared with USB
- 2 x General purpose serial ports on any GPIO
- 11 x ADC inputs
- 5 x Touch sensors
- 1 x SPI port on any GPIO
- 2 x I2C channels on any GPIO
- 1 x CAN port on any GPIO
- 1 x JTAG port
- 3 x Channels of motor PWM on any GPIO
- 8 x Channels of LED PWM on any GPIO
- 8 x Channels of IR transmitter on any GPIO
- 8 x Channels of pulse counters on any GPIO
- 1 x Push-pull reset output
- 1 x Open collector master reset input
- 1 x USB supply enable jumper
- 1 x Green power LED
- 2 x Ethernet status LEDs on Ethernet connector

Some interfaces of the module are multiplexed with the same GPIO pins on ESP32 and cannot be used simultaneously. Please refer to the ESP32 datasheet for details. Numbers are the maximum counts and may not be applicable for your use case.

3. Features

- ESP32-D0WD-V3 Xtensa dual-core 32bit LX6 240MHz MCU
- 520 KB SRAM & 448 KB ROM on ESP32
- 16 MB serial flash memory (W25Q128JVS1Q)
- 10/100 Mbit Ethernet (RTL8201F)
- Wi-Fi 802.11 b/g/n 2.4GHz
- Integrated 2.4GHz antenna
- USB 2.0 programming & monitoring interface
- USB to serial converter (CH340G)
- 5V to 3.3V voltage regulator (1117 series)
- 2.93V supply voltage supervisor (APX811-29UG-7)
- 40 MHz & 32.758 kHz MCU crystals
- Extension headers for GPIO, supply and reset
- Runs with 5V or 3.3V supply voltage
- Industrial temperature range version is available

4. Pin Order & Layout

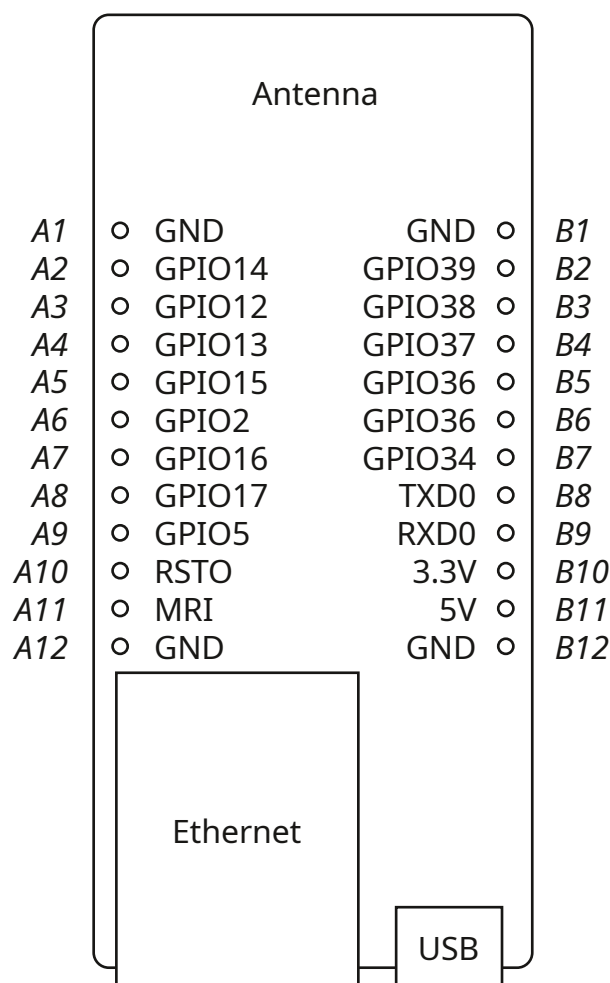


Figure 1. Pin order and layout (top view).

5. Pin Order and Functions

Table 1. Pin order and functions.

| Pin | Name | ESP32 # | Details |
|-----|--------|-------------------|--|
| A1 | GND | - | Power, signal, reference and ESP32 ground connection. |
| A2 | GPIO14 | 17 ⁽¹⁾ | ADC2.6, RTCIO16, TOUCH6, EMAC_TXD2, HSPICLK, HS2_CLK, SD_CLK, MTMS |
| A3 | GPIO12 | 18 ⁽¹⁾ | ADC2.5, RTCIO15, TOUCH5, EMAC_TXD3, HSPIQ, HS2_DATA2, SD_DATA2, MTDI |
| A4 | GPIO13 | 20 ⁽¹⁾ | ADC2.4, RTCIO14, TOUCH4, EMAC_RXER, HSPID, HS2_DATA3, SD_DATA3, MTCK |
| A5 | GPIO15 | 21 ⁽¹⁾ | ADC2.3, RTCIO13, TOUCH3, EMAC_RXD3, HSPICS0, HS2_CMD, SD_CMD, MTDO |
| A6 | GPIO2 | 22 ⁽¹⁾ | ADC2.2, RTCIO12, TOUCH2, HSPIWP, HS2_DATA0, SD_DATA0 |
| A7 | GPIO16 | 25 ⁽¹⁾ | HS1_DATA4, U2RXD, EMAC_CLK_OUT |
| A8 | GPIO17 | 27 ⁽¹⁾ | HS1_DATA5, U2TXD, EMAC_CLK_OUT_180 |
| A9 | GPIO5 | 34 ⁽¹⁾ | HS1_DATA6, VSPICS0, EMAC_RX_CLK |
| A10 | RSTO | - ⁽⁴⁾ | Push-pull reset output. Pulled low for about 200ms at reset. |
| A11 | MRI | - ⁽⁴⁾ | Open collector master reset input. Pull down to reset the module. |
| A12 | GND | - | Power, signal, reference and ESP32 ground connection. |
| B1 | GND | - | Power, signal, reference and ESP32 ground connection. |
| B2 | GPIO39 | 8 ⁽²⁾ | Input only. ADC1.3, RTCIO3 |
| B3 | GPIO38 | 7 ⁽²⁾ | Input only. ADC1.2, RTCIO2 |
| B4 | GPIO37 | 6 ⁽²⁾ | Input only. ADC1.1, RTCIO1 |
| B5 | GPIO36 | 5 ⁽²⁾ | Input only. ADC1.0, RTCIO0 |
| B6 | GPIO35 | 11 ⁽²⁾ | Input only. ADC1.7, RTCIO5 |
| B7 | GPIO34 | 10 ⁽²⁾ | Input only. ADC1.6, RTCIO4 |
| B8 | TXD0 | 41 ⁽³⁾ | UART0 transmit output. GPIO1, CLK_OUT3, EMAC_RXD2 |
| B9 | RXD0 | 40 ⁽³⁾ | UART0 receive input. GPIO3, CLK_OUT2 |
| B10 | 3.3V | - ⁽⁴⁾ | 3.3V supply output if 5V is supplied. 3.3V supply input if no 5V is available. |
| B11 | 5V | - ⁽⁴⁾ | 5V supply output if 5V is supplied via USB. Otherwise 5V supply input. |
| B12 | GND | - | Power, signal, reference and ESP32 ground connection. |

- ESP32 pin numbering is according to the part number of ESP32-D0WD-V3 (QFN48 5x5mm).

(1) GPIO pins are protected with ESD suppressors and are connected to the ESP32.

(2) Input only pins have 470kOhm pull down resistors, are protected with ESD suppressors and are connected to the ESP32.

(3) GPIO pins shared with UART0 port, are not recommended to use as general purpose IO pins. They are multiplexed with the USB port as well.

(4) Reset and supply pins are protected with ESD suppressors.

6. Electrical And Environmental Characteristics

Table 2. Absolute maximum ratings.

| Parameter | Min | Max | Unit |
|-------------------------------------|-----|-----|------|
| Supply Voltage (5V) | 0 | 6 | V |
| Supply Voltage (3.3V) | 0 | 3.6 | V |
| GPIO Input Voltage | 0 | 3.6 | V |
| Operating Temperature for UYS2101IA | -40 | 85 | °C |
| for UYS2101CA | 0 | 70 | °C |

Table 3. Transient immunity ratings.

| Parameter | | Value | Unit |
|--------------------------------|-----------------------------------|-------|------|
| V ESD (IEC 61000-4-2) | for header pins | 30 | kV |
| | for Ethernet and USB connectors | 20 | kV |
| | for antenna | 15 | kV |
| I EFT (IEC61000-4-4, 5/50ns) | for header pins | 40 | A |
| | for Ethernet and USB connectors | 40 | A |
| I Surge (IEC61000-4-5, 8/20us) | for header pins | 4.5 | A |
| | for Ethernet and USB on UYS2101IA | 12 | A |
| | for Ethernet and USB on UYS2101CA | 5 | A |

Table 4. Recommended operating conditions.

| Parameter | | Min | Typical | Max | Unit |
|-----------------------|---------------|-----|---------|-----|------|
| Supply Voltage (5V) | | 4.8 | 5 | 5.5 | V |
| Supply Voltage (3.3V) | | 3 | 3.3 | 3.6 | V |
| Temperature | for UYS2101IA | -40 | 25 | 85 | °C |
| | for UYS2101CA | 0 | 25 | 70 | °C |
| Relative Humidity | | 10 | | 90 | % |

Table 5. Electrical characteristics at 25 °C.

| Parameter | Min | Typical | Max | Unit |
|---|------|---------|------|------|
| Vih - Input High Voltage | 2.5 | 3.3 | 3.6 | V |
| Vil - Input Low Voltage | -0.3 | 0 | 0.8 | V |
| Voh - Output High Voltage | 2.65 | 3.3 | | V |
| Vol - Output Low Voltage | | 0 | 0.3 | V |
| I3.3v - 3.3V Pin Output Current | | | 0.5 | A |
| Rp - Pull-up And Pull-down Resistances When Enabled | | 45 | | kOhm |
| Rpd - Pull-down Resistances of GPIO34 to GPIO39 | | 470 | | kOhm |
| Vrt - 3.3 Supply Voltage Reset Threshold | 2.89 | 2.93 | 2.98 | V |

- You may refer to ESP32 datasheet for electrical characteristics not found in this table.

Table 6. Timing and frequency characteristics at 25 °C.

| Parameter | Min | Typical | Max | Unit |
|------------------------------------|------|---------|--------|------|
| Rpwd - MRI Input Reset Pulse Width | 100 | | | ns |
| Rdt - RSTO Output Reset Delay Time | 140 | 200 | 280 | ms |
| Uart0 Baud Rate | 1200 | 115200 | 500000 | bps |
| Antenna Frequency for SWR <= 2 | 2340 | 2440 | 2540 | MHz |

- You may refer to ESP32 datasheet for timing characteristics not found in this table.

7. Functional Blocks

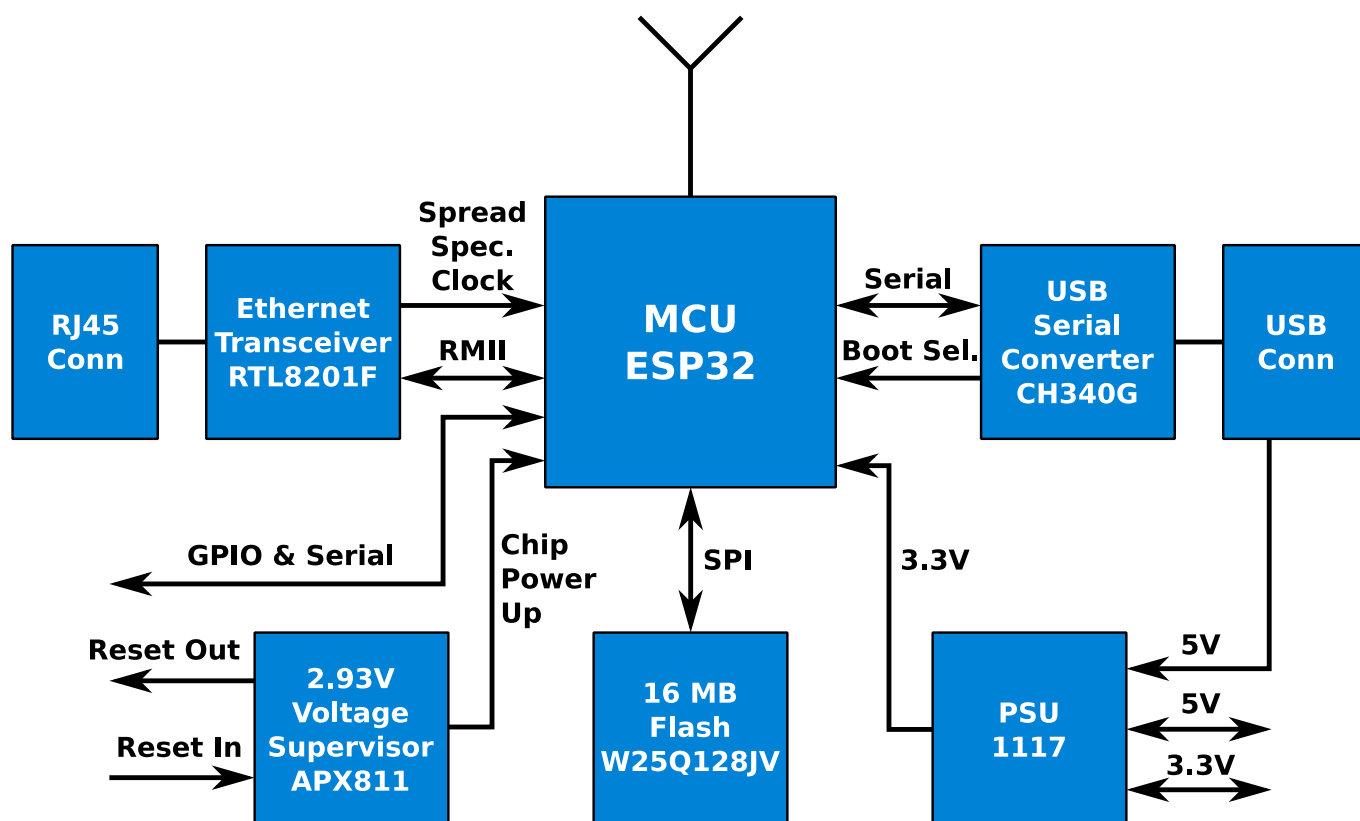


Figure 2. Functional blocks

8. Typical Applications

When UYS2101 runs as a standalone serial to Wi-Fi converter with default firmware, you may plug a USB cable from a main controller and supply 5V and issue AT commands. Ethernet cable is optional if you need a wired network. UYS2101 includes a main MCU (ESP32) so that you may program it with your custom firmware, and then it can run without another main controller.

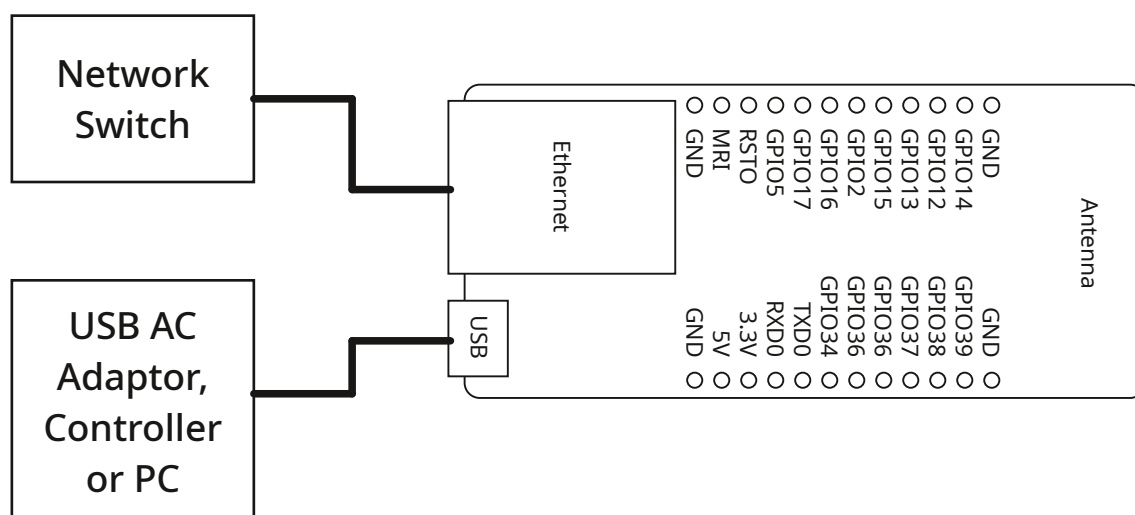


Figure 3. Application without using a base board.

When UYS2101 runs on a base board, you may supply either 5V or 3.3V. At commands can be issued over UART0 on the header pins. When 5V is available, 3.3V pin on the headers become a supply output pin. UYS2101 includes a main MCU (ESP32) so that you may program it with your custom firmware, and then it may run without the MCU. You can implement the power supply (i.e. 12V to 5V) and peripherals on the base board.

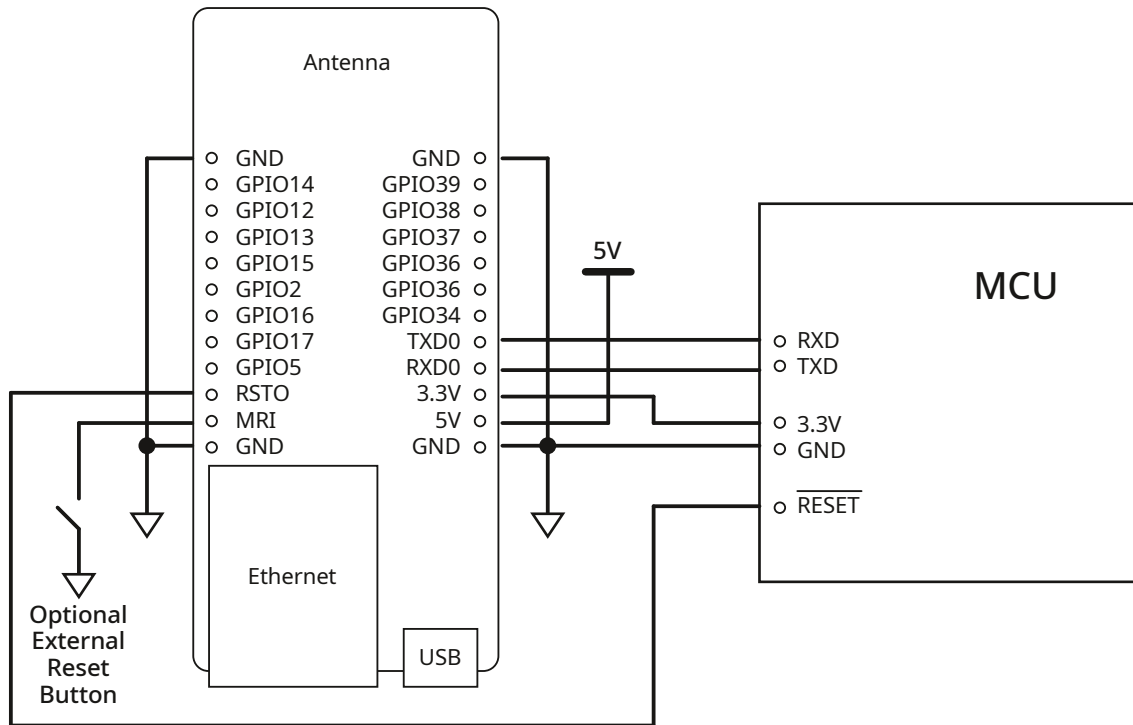


Figure 4. Application with a base board and a main MCU.

Some GPIO pins act as configuration inputs at boot time. Although you may use them regular GPIOs after boot, you need to pay attention while connecting pull-down or pull-up resistors to them. Table 7 gives a summary about default pull status.

Table 7. GPIO pin default (integrated) pull resistors and boot time configurations.

| Pin | Name | Details | At Reset | After Reset |
|-----|-----------------------|--|-------------|-------------|
| A2 | GPIO14 ⁽¹⁾ | MTMS. | | pulled up |
| A3 | GPIO12 | MTDI. SDIO Voltage. 0: 3.3V, 1: 1.8V | pulled down | pulled down |
| A4 | GPIO13 | MTCK. | | pulled down |
| A5 | GPIO15 ⁽¹⁾ | MTDO. Boot logs at TXD0. 1: Enabled, 0: Disabled | pulled up | pulled up |
| A6 | GPIO2 ⁽²⁾ | Bootloader mode. 0: Enabled when GPIO0 is 0 | pulled down | pulled down |
| A9 | GPIO5 ⁽¹⁾ | SDIO slave timing. | pulled up | pulled up |
| B8 | TXD0 | GPIO1. | pulled up | pulled up |
| B9 | RXD0 | GPIO3. | pulled up | pulled up |

- ESP32 pin numbering is according to the part number of ESP32-D0WD-V3 (QFN48 5x5mm).

(1) These GPIOs output a PWM signal at boot time.

(2) GPIO0 is connected to BOOT button internally on board. This button and automatic bootloader activation works only if GPIO2 is pulled down at boot time.

Jumper J41 is for selecting between different supply options. The module can run from 5V or 3.3V from the header pins, or 5V from the USB connector.

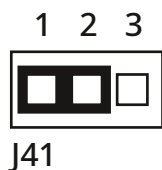


Figure 5. 5V on USB connector is shorted to module 5V net. Power is supplied from USB. 5V and 3.3V on pin headers are supply outputs.

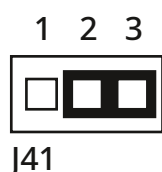


Figure 6. 5V on USB connector is disconnected. Power is supplied from 5V or 3.3V on pin headers. If 5V is supplied, 3.3V pin becomes supply output.

UYS2101 has an onboard, 2.4GHz PCB antenna. Although the antenna has a bandwidth of about 200MHz below SWR of 2, items in the close vicinity degrades its performance. A plastic enclosure or a base board PCB should be at least 10mm away from the antenna area to have acceptable radiation efficiency.

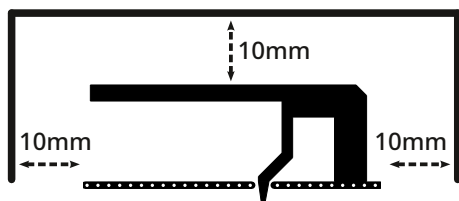


Figure 7. Minimum distances from a plastic enclosure to the PCB antenna.

9. Dimensions

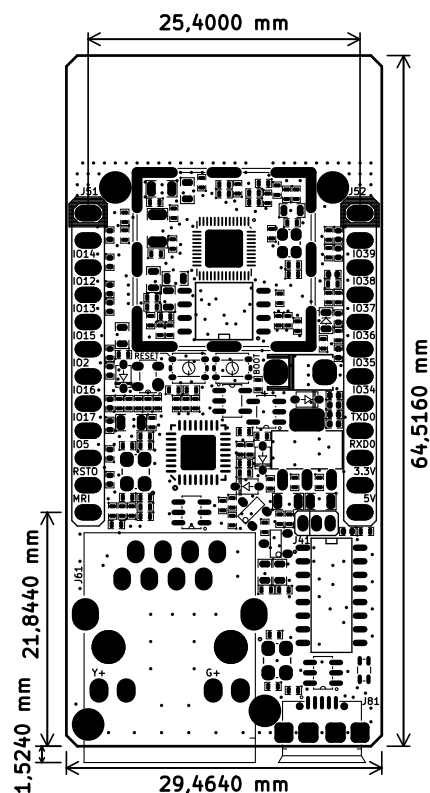


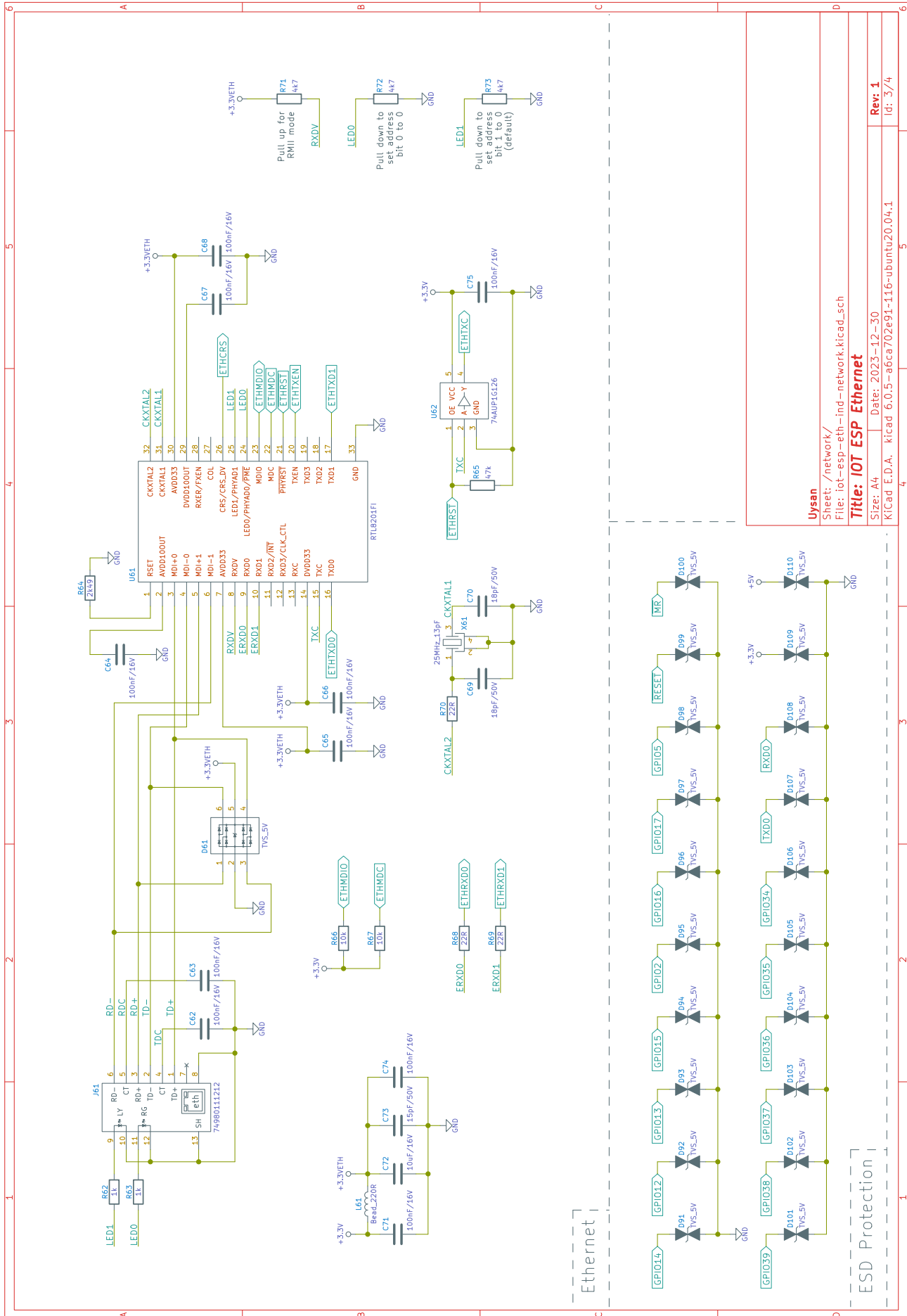
Figure 8. Dimensions.

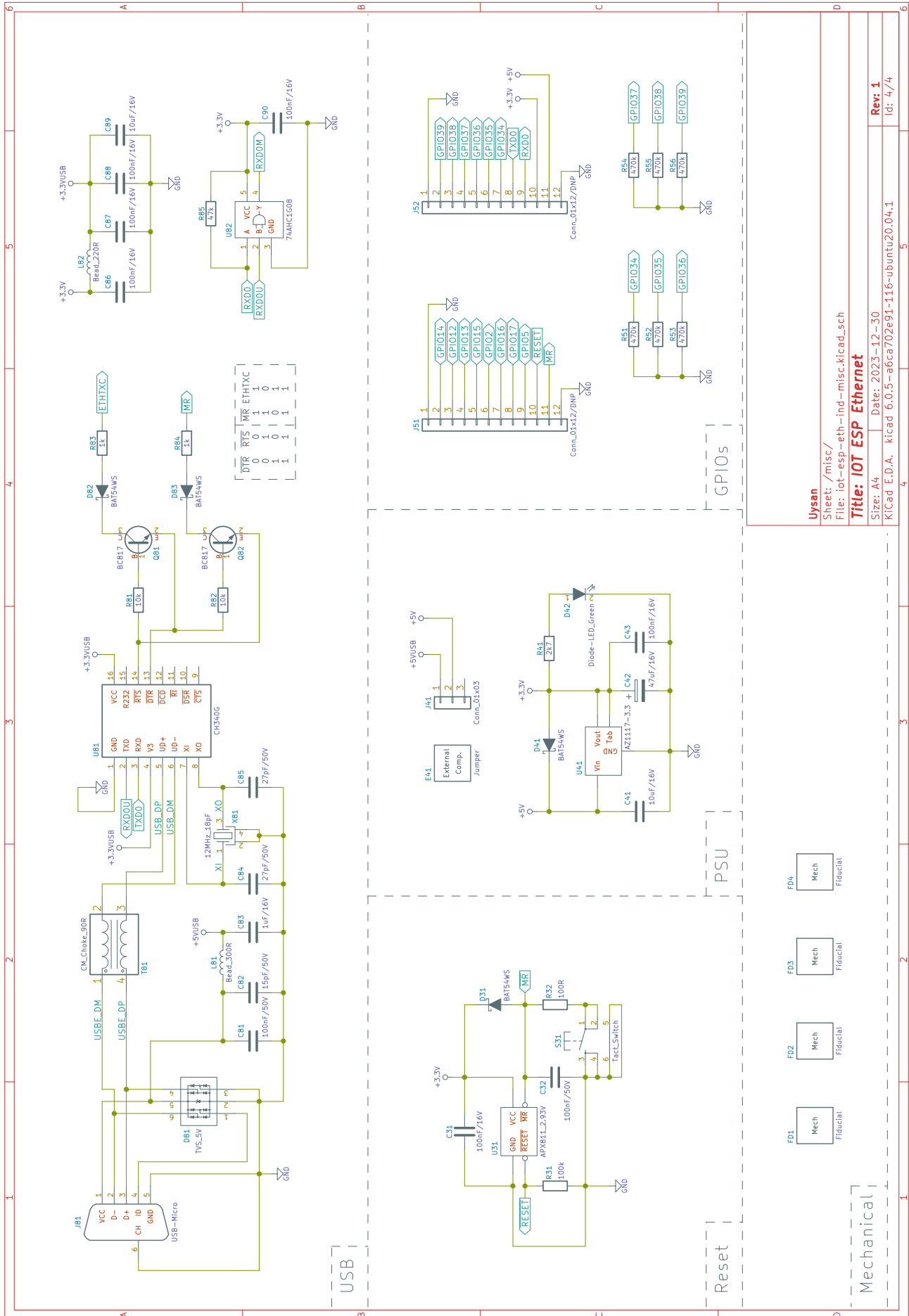
10. Schematics

The design files for UYS2101 are publicly available. It is an open source hardware project licensed with "CERN Open Hardware License Version 2 - Permissive" license. This document includes the schematics on the next 3 pages. All the project files are shared on the below link:

<https://github.com/uysan/iot-esp-eth>







11. Disclaimer And Liability

UYS2101IA and UYS2101CA are provided 'as is' and any express or implied warranties, including, but not limited to, implied warranties of merchantability, of satisfactory quality, non-infringement of third party rights, and fitness for a particular purpose or use are disclaimed in respect of any Product to the maximum extent permitted by law. Uysan makes no representation that any Product does not or will not infringe any patent, copyright, trade secret or other proprietary right. The entire risk as to the use, quality, and performance of any Product shall be with You and not the Uysan. This disclaimer of warranty is an essential part of this License and a condition for the grant of any rights granted under this License.

Uysan shall, to the maximum extent permitted by law, have no liability for direct, indirect, special, incidental, consequential, exemplary, punitive or other damages of any character including, without limitation, procurement of substitute goods or services, loss of use, data or profits, or business interruption, however caused and on any theory of contract, warranty, tort (including negligence), product liability or otherwise, arising in any way in relation to the Making or Conveyance of a Product, even if advised of the possibility of such damages, and You shall hold the Uysan free and harmless from any liability, costs, damages, fees and expenses, including claims by third parties, in relation to such use.

Related product names and trademarks are the property of their respective owners, which are not associated or affiliated with Uysan.

Copyright © 2024 Uysan. All rights reserved.

Contact

Address:

Celebi Elektronik Ltd.
Kazimiye Mahallesi, Salih Omurtak Caddesi, Olimpia
Is Merkezi, No:14/B20 Corlu, Tekirdag, Turkey

www.uysan.com
info@celebielektronik.com.tr